



Tuesday 17th October 2023

Dear Parents / Carers,

Vehicle Access – Front Playground

Many of you will be aware that, due to the severe shortage of school places in local special schools, the Education Authority (EA) recently opened a provision within our school – A Specialist Provision in Mainstream Class.

This provision supports pupils with a statement of special educational needs and a diagnosis of having a severe learning difficulty.

This classroom is located in the Primary 1 corridor and children accessing this provision will enter and exit via the Primary 1 door.

In order to support some of the pupils accessing this provision, given their needs, it has been agreed with the EA that their transport will be required to get as close to the Primary 1 door as possible. This will mean vehicles requiring access to the front playground at specific times during the day. **Please be advised that this will be outside of the main school starting and finishing times to ensure that there are no adults or children on the playground.**

The EA have asked me to write to parents to inform them of this and to advise parents of the following:

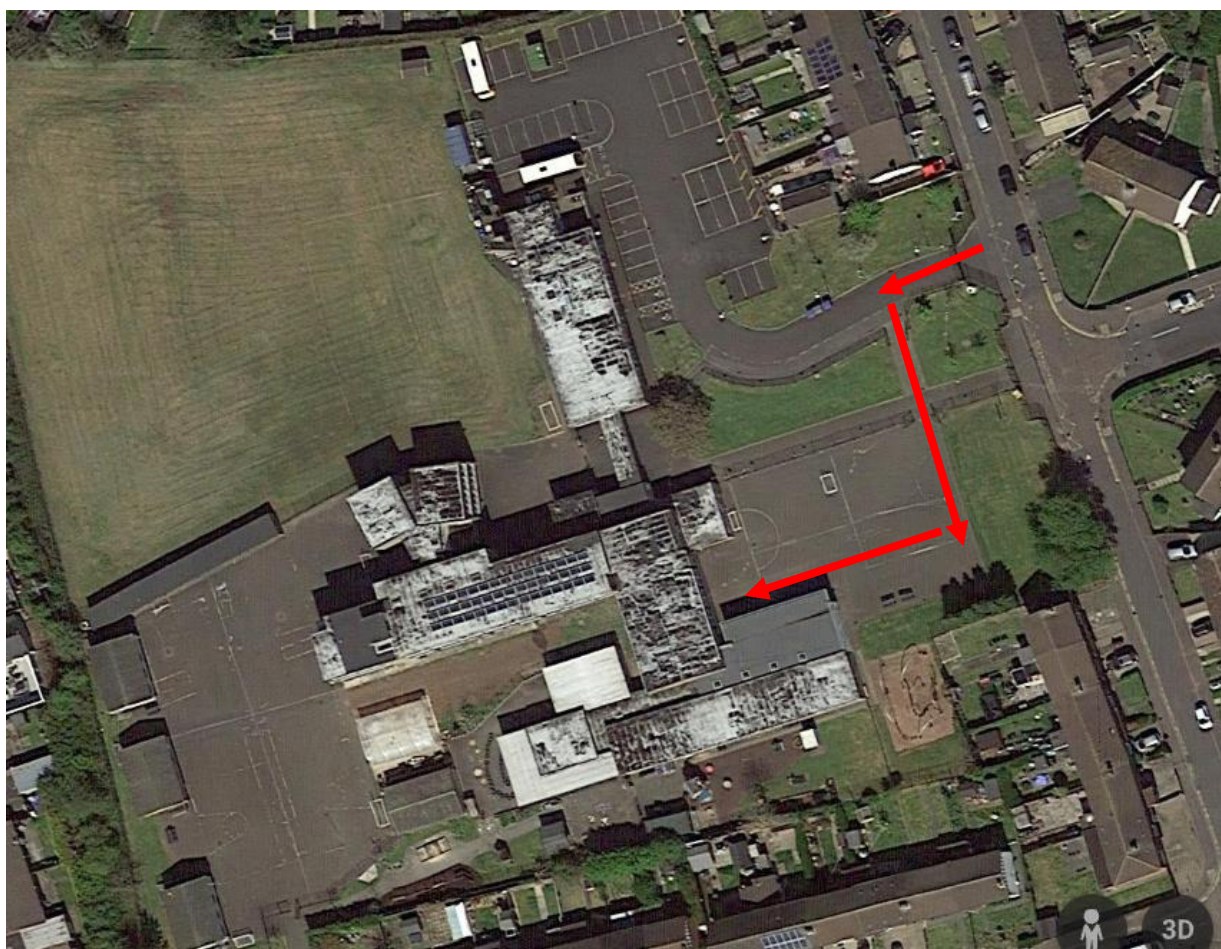
- The EA will be erecting signage at the vehicle access to the playground to make pedestrians aware that vehicles may be in the vicinity.
- The school will ensure that a member of staff is present when any vehicle dropping/collecting children from the provision is accessing the playground.
- In the extremely rare event that transport arrives when adults or children are on the playground, the transport will not be given access to the playground until the playground is cleared of adults and/or children.
- Parents / carers should be aware of possible vehicle access to the playground and ensure that children are always supervised when on school grounds.



Victoria Primary School & Nursery Unit

Coronation Road, Carrickfergus,
County Antrim, BT38 7EZ
Tel: 028 9335 1781
Email : victoriaprimary@hotmail.co.uk
Principal : Mr C. Fulton BA Hons (QTS)

Please see the image of our school below. The red line on the image shows you the area that a vehicle will access the playground.



As previously mentioned, transport will normally be arriving/departing outside of the school's normal start and finish times.

Thanks,

Mr C. Fulton
Principal